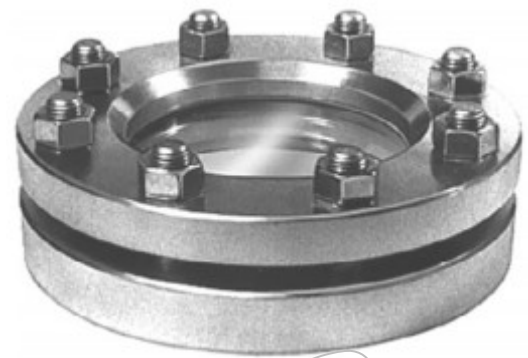


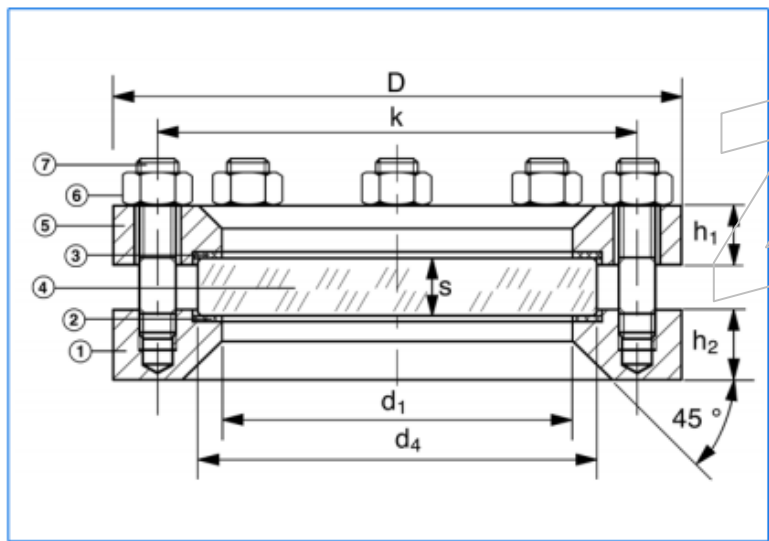


**ZIGMÄFLOW**  
INDUSTRIAL FLOW CENTER



# W-Circular sight glass fittings to DIN 28120

Nominal diameter (DN)	Nominal pressure (PN) (bar)	Viewing diameter $d_1$	Glass disc		Base flange and cover flange				Bolts or studs and nuts		
			$d_4$	s	D	k	$h_1$	$h_2$	Number	Size	Tightening torque (Nm)
80	6	80	100	10	165	125	16	30	4	M 16	28
	10			15							32
	16			15							
100	6	100	125	15	200	160	20	30	8	M 16	20
	10			15							23
	16			20							
125	6	125	150	15	220	180	18	30	8	M 16	26
	10			20			22				30
	16			25			22				30
150	6	150	175	20	250	210	18	30	8	M 16	32
	10			20			25				30
	16			25			25				30
175	6	175	200	20	285	240	18	36	8	M 20	47
	10			25			30				36
	16			30			30				36
225	6	225	250	25	340	295	20	36	8	M 20	63
	10			25			35				36
	10			30			35				36



### Assembly and construction materials:

		Standard	On demand*
①	<b>Base flange</b>	Steel RSt 37-2	1.4404
⑤	<b>Cover flange</b>	1.4571 (= AISI 316 Ti) or 1.4541 (= AISI 321)	(= AISI 316 L) Aluminium Titan Inconel Steel zinked
②	<b>Gaskets</b>	KLINGERSil C 4400	PTFE
③			Silicone Viton Gylon
④	<b>Glass disc</b>	Sodium silicate to DIN 8902 (max. 150 °C)	Borosilicate to DIN 7080 (max. 280 °C) Quartz
⑥	<b>Nuts</b>		
⑦	<b>Bolts or studs</b>	5.6 / 5.2	A2 / A4

Zigmaglas Quality Sight Product

[www.zigmaflow.com](http://www.zigmaflow.com)